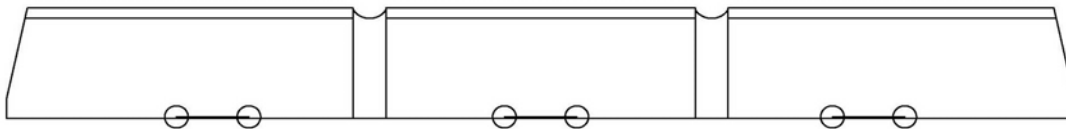


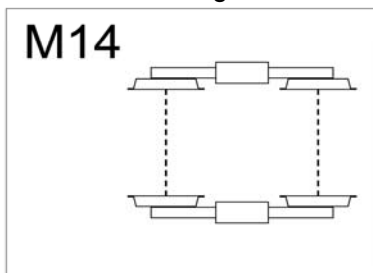
Siemens Avenue



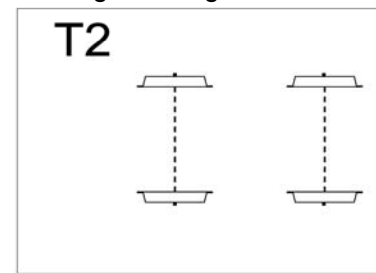
Concept Schematic



Powered Running Gear



Trailing Running Gear



1.1	Partial or 100% Low Floor?	100%
1.2	Running Gear	
a.	Type:	Rotating Truck
b.	Wheel diameter(s)	600 mm (23.6 in.) new, 520 mm (20.5 in.)
c.	Motor type	AC 3 phase Asynchronous Motor
d.	Wheelset/drive arrangement(s)	M14, T2
1.3	Can all axles be powered if desired?	Yes, but not recommended
1.4	Basic Configuration	
a.	Available as both single-ended and double-ended?	double-ended
a.1	Approximate percentage of cost differential?	N/A
b.	Available as both single-sided and double-sided?	double sided
b.1	Approximate percentage of cost differential?	N/A
1.5	Floor height(s) at door thresholds	356 mm (14 in.)
1.6	Aisle width (minimum)	620 mm (24.4 in.)
1.7	ADA compliance options	
a.	Load leveling available as a standard option?	No
b.	Powered bridge plates available as a standard option?	Yes

1.8 Which features can be readily changed?

- Configurable number of doors (up to 12)
- Location of doors configurable (either door or windows)
- Seats layout arrangement, seat colors and exterior decals

2 SIZE / CAPACITY

2.1	Standard options for vehicle width	2650 mm (8 ft. 8 in.)
2.2	Standard options for overall vehicle length	
a.	Minimum Standard Length	27.73 m (91 ft.)
a.1	Modules for minimum length	3
a.2	Passenger capacity (seated + standing @ 4 pass/sq m) for min. length	202
b.	Maximum Standard Length	27.73 m (91 ft.)
b.1	Modules for maximum length	3
b.2	Passenger capacity (seated + standing @ 4 pass/sq m) for max. length	202
c.	Is multiple-unit operation a standard option?	No

3 PERFORMANCE

3.1	Minimum turning radius for a standard vehicle	18 m (59 ft.)
3.2	Minimum vertical curve a standard vehicle can negotiate?	
a.	crest	155 m (509 ft.)
b.	sag	440 m (1,444 ft.)
3.3	Maximum speed	80 kph (50 mph)
3.4	Std. braking and acceleration rates (load levels EL E-EL 4 as per EN 13452-1)	
a.	Acceleration	1.3 m/s ²
b.	Service Braking	1.2 m/s ²
c.	Emergency Braking	2.8 m/s ²
3.5	Depth of standing water that loaded vehicle can safely operate?	60 mm (2.4 in.) @5km/h for limited time

NOTES: